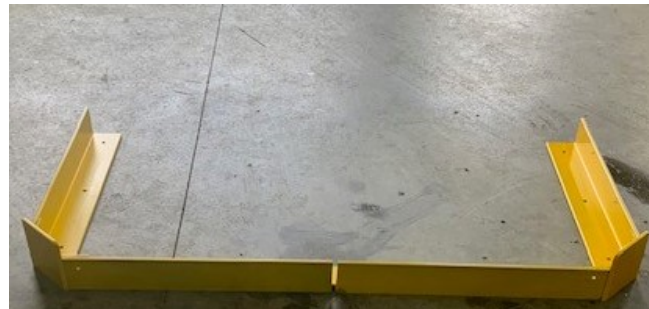


## **Asset Protection.**

Insight Asset Protection safeguards racks and other valuable assets from impacts caused by both powered and non-powered material handling equipment. This effective solution helps prevent costly and hazardous damage, while also extending the lifespan of your assets. Additionally, it enhances the safety of both your employees and customers.



## **Features & Benefits.**

3/8" heavy duty material to suit your needs.

Steel floor angles attach securely to floor with 4-1/2" wedge anchors depending on length. Included.

Custom sizes and colors available upon request.

## **Specifications:**

Item number:

Material Thickness:

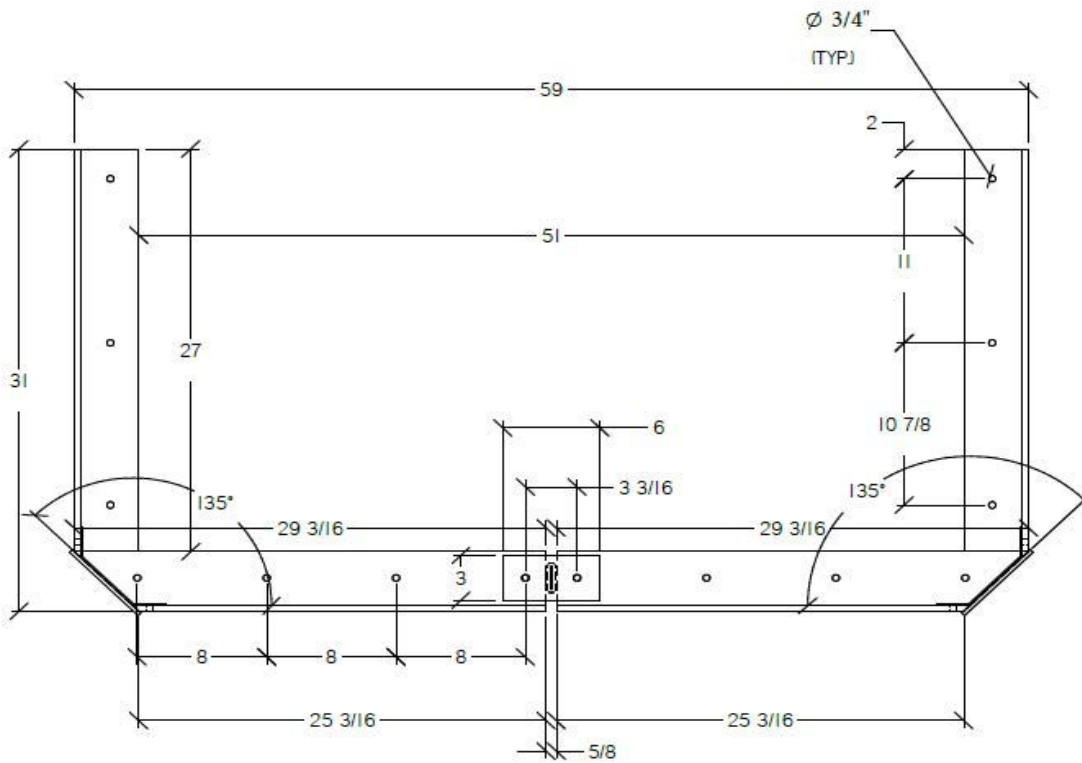
3/8" heavy duty.

Standard height: 6"-18"

Anchor Size: 3/4" x 4.25" wedge anchor.



**Asset Protection Dimensions.**



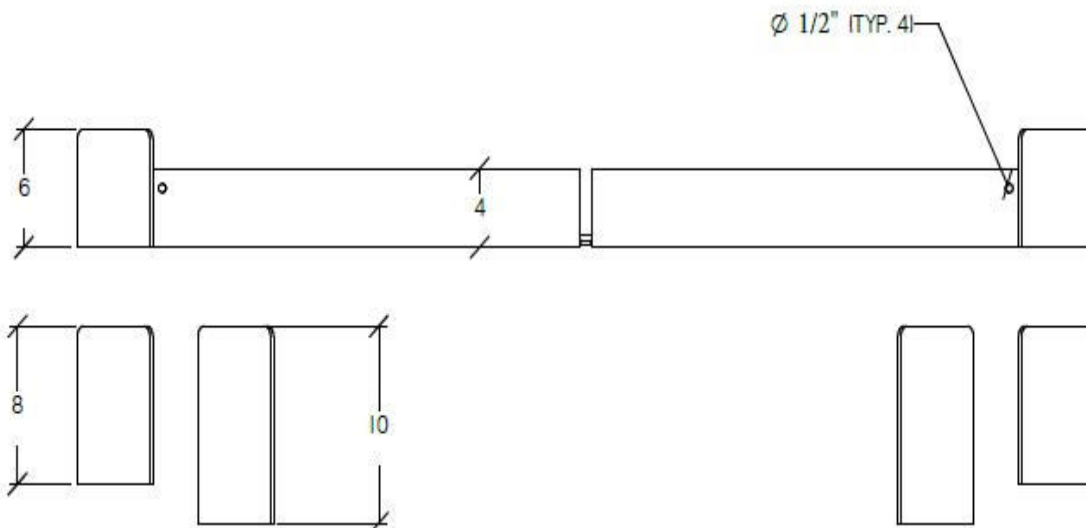
Notes:  
Use 3/4" size Wedge Anchors (included).

To ensure optimal protection, please consider the following steps:

Measure the total length of the area to be protected.

Check for any protruding objects or unique configurations that may require additional measurement (e.g., around corners).

Position the protection equipment as close as possible to the area needing coverage, while still allowing enough space for proper installation and an effective barrier



**Concrete/Wall Protection:**

Our floor-mounted concrete/wall protection offers reinforced shielding to prevent items or material handling equipment from encroaching into designated protected areas.



**Features & Benefits.**

3/8" heavy duty material to suit your needs.  
 Steel floor angles attach securely to floor with 4-1/2" wedge anchors depending on length. Included.  
 Custom sizes and colors available upon request.

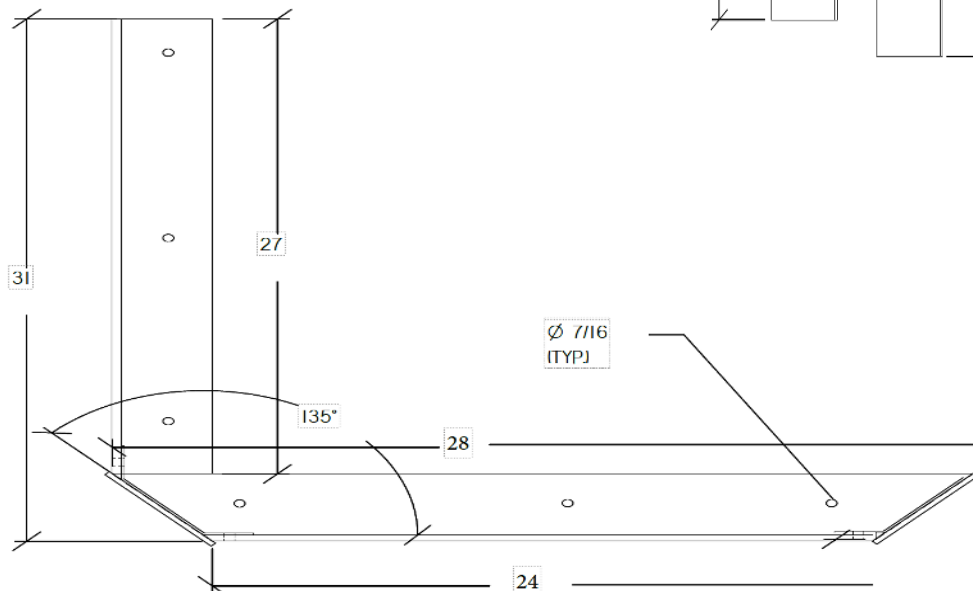
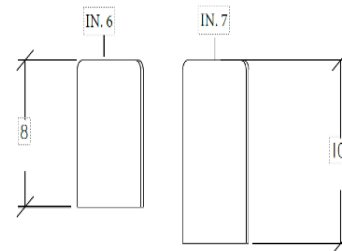
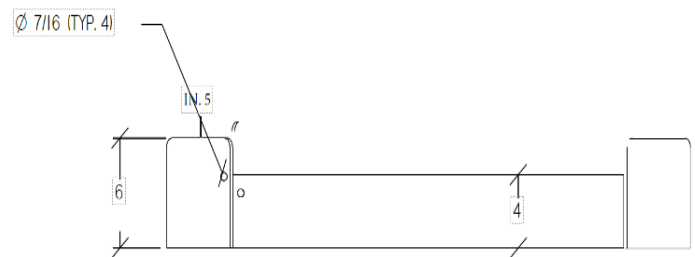
**Specifications:**

**Material Thickness:**

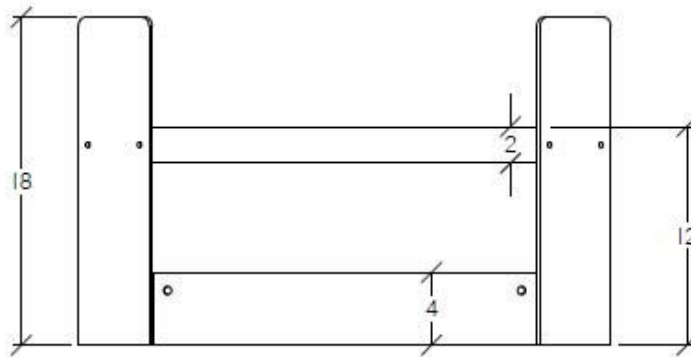
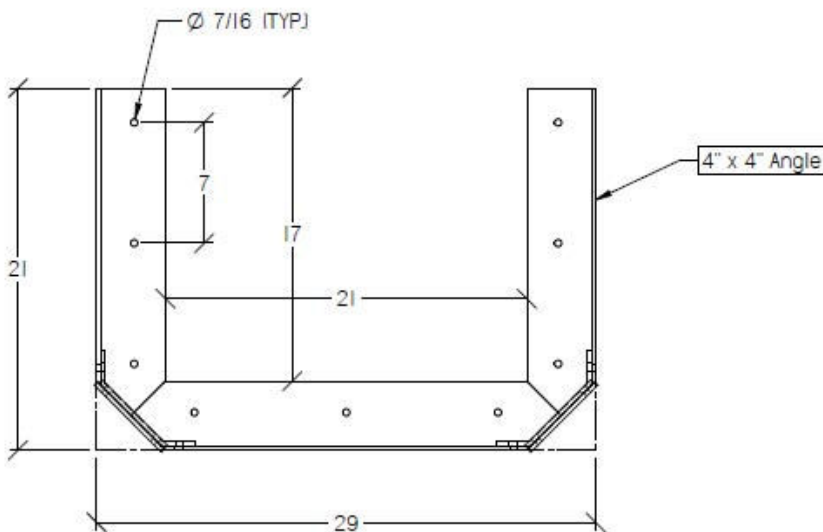
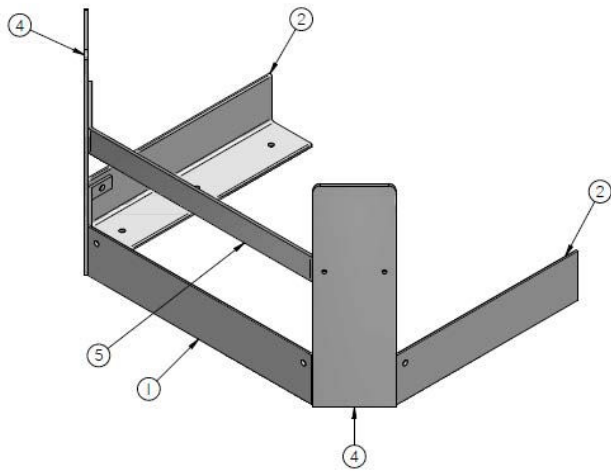
3/8" heavy duty.

Standard height: 6"-18"

Anchor Size: 1/2" x 4.25" wedge anchor.



Deep Freezer AP Dimensions:



Notes:

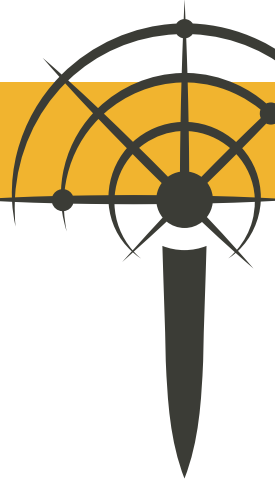
Use 1/2" size Wedge Anchors (included).

To ensure optimal protection, please consider the following steps:  
Measure the total length of the area to be protected.

Check for any protruding objects or unique configurations that may require additional measurement (e.g., around corners).

Position the protection equipment as close as possible to the area needing coverage, while still allowing enough space for proper installation and an effective barrier





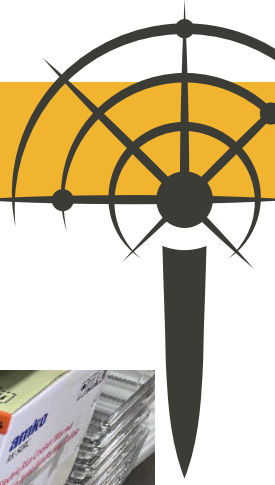
Pictures of AP  
install.

Before:



As you can see, the assets are not protected by material handling equipment and are at risk of being damaged..



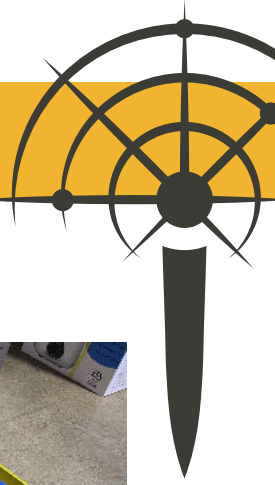


Pictures of AP Install.  
Setting up



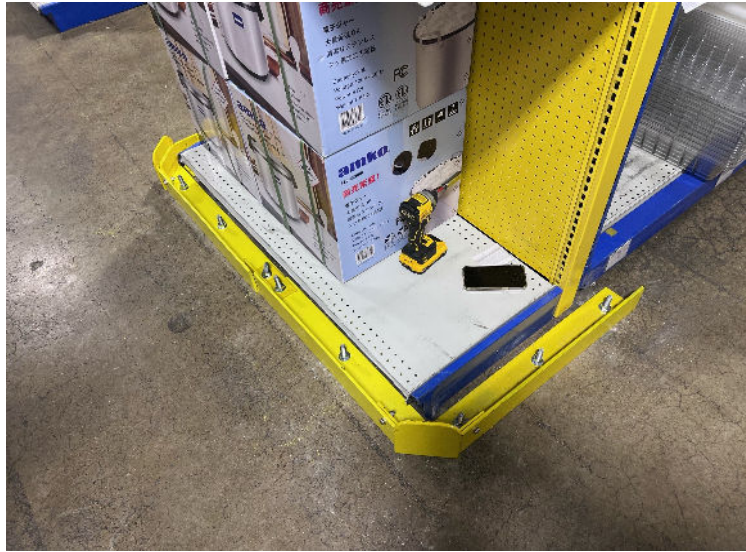
Drilling & Installing

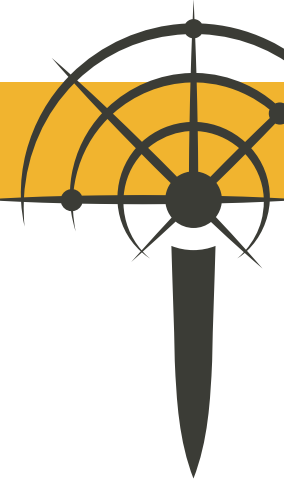




Pictures of AP Install

Installation Complete





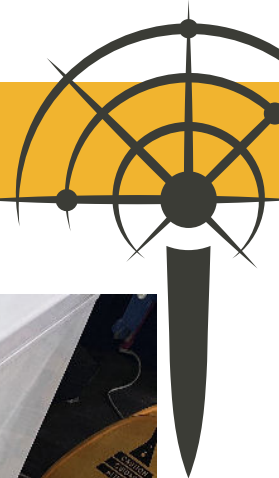
## Pictures of additional AP rails Before



## Installing







AP installation complete

